

VITA SUPRINITY®

Product information



VITA shade taking

VITA shade communication

VITA shade reproduction

VITA shade control

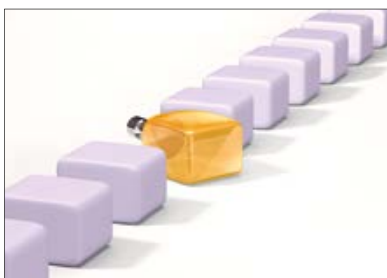
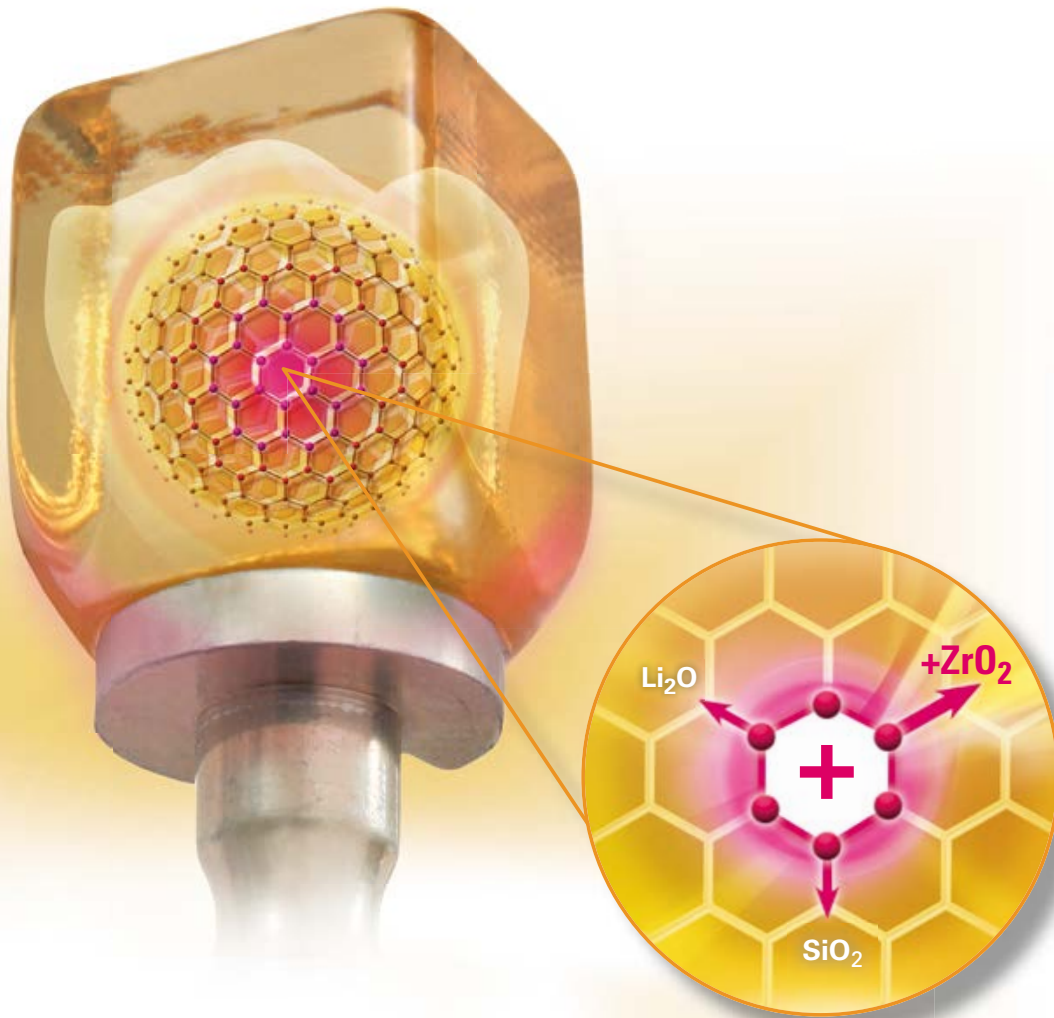
Date of issue: 06.13

VITA shade, VITA made.

VITA

VITA SUPRINITY
VITA SUPRINITY Polishing Kit
VITA AKZENT Plus
VITA VM 11

VITA SUPRINITY® – Glass ceramic. Revolutionized.



The new generation of glass ceramics: VITA SUPRINITY.

Product description

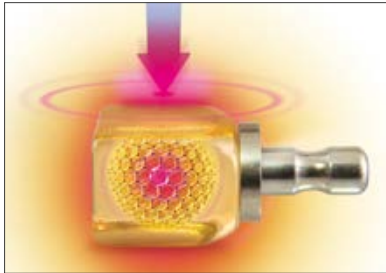
VITA Zahnfabrik offers VITA SUPRINITY, a new generation of glass ceramic material products. With the aid of an innovative manufacturing process, the glass ceramic is enriched with zirconia (approx. 10 % by weight). The result is the world's first zirconia reinforced lithium silicate ceramic (ZLS)*.

This new glass ceramic features a special fine-grained and homogeneous structure which guarantees excellent material quality and consistent high load capacity, as well as long-term reliability. Moreover, the material also offers outstanding processing characteristics such as easy milling and polishing.

Thanks to the excellent translucency, fluorescence and opalescence of this new glass ceramic material, VITA SUPRINITY provides excellent esthetic properties. VITA SUPRINITY covers a wide range of indications that includes anterior and posterior crowns, suprastructures on implants, veneers, inlays and onlays.

*) This class of material is a joint development of VITA Zahnfabrik, DeguDent GmbH and Fraunhofer-Institut für Silicate Research ISC.

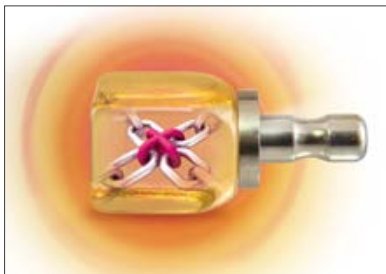
VITA SUPRINITY® Product benefits



The new generation of glass ceramics for high load capacity.

Excellent load capacity:

Thanks to excellent mechanical load capacity, VITA SUPRINITY ensures high reliability and long-term clinical success.



Increased reliability thanks to a zirconia reinforced glass ceramic matrix.

Outstanding reliability:

The result of continuous load tests and the Weibull modulus show that VITA SUPRINITY offers durable restorations and a maximum level of reliability.



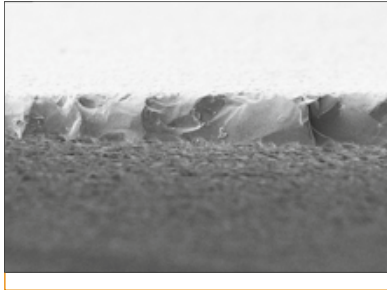
Processing made easy

Simple processing:

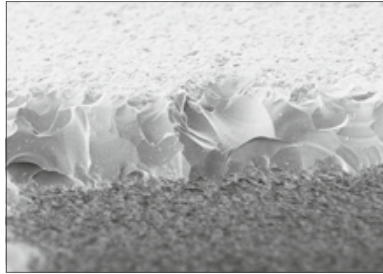
This new glass ceramic features high firing stability and can be crystallized without using an auxiliary firing paste. Moreover, the material can be easily reworked manually and polished. After polishing, VITA SUPRINITY exhibits an excellent surface quality.

VITA SUPRINITY® Product benefits

Top view of 30°wedge:
VITA SUPRINITY, 200 x magnification



Top view of 30°wedge:
Lithium disilicate ceramic, 200 x magnification

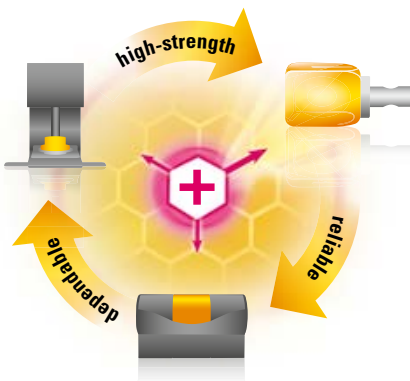


Pictures provided by: VITA R&D



Optimal precision:

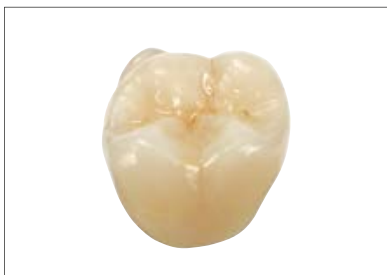
Compared to lithium disilicate ceramics, VITA SUPRINITY reveals improved edge stability after milling with Sirona's MC XL system. As a result, restorations with higher precision are guaranteed.



Reliable and user-friendly: milling, firing and processing.

High process reliability:

VITA SUPRINITY ensures high processing reliability. As a result, temperatures during the crystallization process, that are slightly below or above the standard temperature, do not have any significant influence on dimensional stability or mechanical properties.



VITA SUPRINITY restorations impress with a natural play of colors.

Outstanding esthetics:

Thanks to the excellent translucency, fluorescence and opalescence, esthetically pleasing results can be achieved with VITA SUPRINITY. Plus, the natural play of colors can be perfectly reproduced with VITA VM 11 veneering material.

VITA SUPRINITY® Indications, variations, geometries, shades



Ideal for a variety of indications.

Range of indications:

VITA SUPRINITY can be used for a wide range of indications including anterior and posterior crowns, suprastructures on implants, veneers, inlays and onlays.

Variations:

VITA SUPRINITY is the zirconia reinforced lithium silicate ceramic in the precrystallized state. A fully crystallized version, VITA SUPRINITY FC, is also available.

Geometries:

VITA SUPRINITY is available in the geometry LS-14 (18 x 14 x 12 mm).

Range of shades:

VITA SUPRINITY is available in the shades 0M1, A1, A2, A3, A3.5, B2, C2 and D2. Moreover all block shades are available in two translucency levels (T = Translucent and HT = High Translucent).



VITA SUPRINITY® Polishing Set (clinical/technical)



Product description

The VITA SUPRINITY Polishing Sets were developed for reliable, efficient and material-specific surface treatment of zirconia reinforced lithium silicate ceramic (ZLS) restorations in dental practices and laboratories. The sets include various polishing instruments for pre- and high-gloss polishing.

These instruments are suitable for careful and gentle polishing of occlusal surfaces, cusps, fissures and restoration contact points. These polishing instruments ensure a brilliant shine on the finished restoration.



The easy and fast way to an excellent shine.

Benefits

Excellent final results:

Highly esthetic and plaque-resistant surfaces are produced with these instruments. Precise concentricity, matched grit sizes and the individual geometries of the instruments guarantee superior results.

Simple and safe handling:

The instruments provide removal capacity that can be easily controlled with minimal wear. Good handling without polishing paste enables simple and fast processing. Safe use of these clinical instruments is guaranteed through sterilization.

Gentle and careful processing:

These instruments, which were developed especially for VITA SUPRINITY, ensure gentle and careful processing.

As a result, for example, the risk of possible formation of microcracks is reduced.

VITA SUPRINITY® – Characterization with VITA AKZENT® Plus



Product description

With the 19 VITA AKZENT Plus stains you can characterize the shade of any dental ceramic material easily and efficiently, regardless of the restoration's CTE. These new fluorescent stains allow internal staining of restorations during layering as well as staining and glazing of external surfaces.

Depending on the user's preferred method of processing and the relevant area of application, VITA AKZENT Plus stains are available as powders and ready-to-use pastes. The glazing Body Stains and Glaze materials are also available as sprays.

Three different application forms are available:

POWDER:

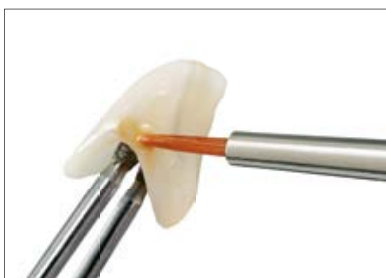
for unlimited flexibility and cost-effectiveness

PASTE:

ready-to-use pastes with uniform consistency and homogeneous pigmentation

SPRAY:

ready-to-use, easy-to-apply glaze and finishing agent stains



The stains enable outstanding shade characterization.

Benefits

Versatile:

With 19 shades and 3 application forms, VITA AKZENT offers dental practices and laboratories a complete range of products for numerous characterization options.

User-friendly:

Whether you're working on internal coloring, surface characterization or fine glazing: with VITA AKZENT Plus fluorescent stains, you can adapt your restoration easily and effortlessly.

Cost-effective:

VITA AKZENT Plus can not only be used for characterizing VITA SUPRINITY restorations, the stains are also suitable for all other dental ceramic materials regardless of the restoration's CTE.

VITA SUPRINITY® – Individualization with VITAVM®11



Product description

VITA VM 11 is a low-melting fine-structure feldspar ceramic that has been developed especially for individualizing crown substructures made of zirconia reinforced lithium silicate ceramic (ZLS).

Due to its individual CTE, a separate veneering material is required for this new generation glass ceramic. The perfectly matched CTE values of substructure and veneering materials help minimize stress to ensure superior bonding and veneering reliability that is free of warping.

Benefits

Highly esthetic restorations:

The high translucency and warm shades of VITA VM 11 in combination with the opalescent effect of VITA SUPRINITY create highly esthetic restorations with a vivid play of colors.

Reliable bonding:

Stress-free and reliable bonding is ensured through a perfect match of both CTE ranges.

Simple processing:

Excellent stability, minimal shrinkage and high edge stability are distinctive features of VITA VM 11. Thanks to the excellent moisture absorption of VITA SUPRINITY, multiple layering without liner firing or washbake is possible.

Unsurpassed firing stability:

The outstanding firing properties of VITA VM 11 result in very high dimensional stability even after several firings.

Excellent grinding and polishing properties:

Thanks to the proven fine structure of VITA VM 11, its smooth and densely sealed surface can be easily and quickly polished.



VITA SUPRINITY® Data and assortments

VITA SUPRINITY® for CEREC® / inLab®

VITA SYSTEM 3D-MASTER® and Classical range of shades

VITA SUPRINITY High Translucent

Shade	Design.	Geometry	Content	Prod. No.
0M1-HT	LS-14	18 x 14 x 12 mm	5 pieces	EC4S010101
A1-HT	LS-14	18 x 14 x 12 mm	5 pieces	EC4S010130
A2-HT	LS-14	18 x 14 x 12 mm	5 pieces	EC4S010131
A3-HT	LS-14	18 x 14 x 12 mm	5 pieces	EC4S010132
A3.5-HT	LS-14	18 x 14 x 12 mm	5 pieces	EC4S010133
B2-HT	LS-14	18 x 14 x 12 mm	5 pieces	EC4S010136
C2-HT	LS-14	18 x 14 x 12 mm	5 pieces	EC4S010140
D2-HT	LS-14	18 x 14 x 12 mm	5 pieces	EC4S010143

VITA SUPRINITY Translucent

Shade	D _e ^I	Geometry	Content	Prod. No.
0M1-T	LS-14	18 x 14 x 12 mm	5 pieces	EC4S010001
A1-T	LS-14	18 x 14 x 12 mm	5 pieces	EC4S010030
A2-T	LS-14	18 x 14 x 12 mm	5 pieces	EC4S010031
A3-T	LS-14	18 x 14 x 12 mm	5 pieces	EC4S010032
A3.5-T	LS-14	18 x 14 x 12 mm	5 pieces	EC4S010033
B2-T	LS-14	18 x 14 x 12 mm	5 pieces	EC4S010036
C2-T	LS-14	18 x 14 x 12 mm	5 pieces	EC4S010040
D2-T	LS-14	18 x 14 x 12 mm	5 pieces	EC4S010043

System compatibility:

VITA SUPRINITY can be processed with Sirona's CEREC or inLab MC XL systems, software version 4.2 or higher. Practices or laboratories with a Sirona milling system with a different system configuration can alternatively select lithium disilicate ceramic in the material menu for processing.

VITA SUPRINITY® Polishing Set clinical / technical

Assortments

Designation	Details	Content/piece	Prod. No.
VITA SUPRINITY Polishing Set clinical	2-stage polishing system with pre- and high-gloss polishers for the contra-angle	6	ELSPSETC
VITA SUPRINITY Polishing Set technical		8	ELSPSETT

VITA SUPRINITY® Data and assortments

VITA AKZENT® Plus

AKZENT Plus range of shades

Product	Shade	Designations	Available as		
			Spray	Powder	Paste
BODY STAINS <ul style="list-style-type: none"> • Translucent glazing stains • For modifying the shade effect of the base material 	Yellow	BS 01	☑	☑	☑
	Yellow-brown	BS 02			
	Orange	BS 03			
	Olive gray	BS 04			
	Gray-brown	BS 05			
EFFECT STAINS <ul style="list-style-type: none"> • For natural surface effects 	White	ES 01	-	☑	☑
	Cream	ES 02			
	Lemon yellow	ES 03			
	Sunshine yellow	ES 04			
	Orange	ES 05			
	Russet	ES 06			
	Khaki	ES 07			
	Pink	ES 08			
	Dark red	ES 09			
	Lilac	ES 10			
	Blue	ES 11			
	Gray-blue	ES 12			
	Gray	ES13			
	Black	ES 14			

VITA SUPRINITY® Data and assortments

VITA AKZENT® Plus assortments

VITA AKZENT Plus POWDER KIT (Prod. No. BAPK)

Quantity	Content	Material
14	3 g	EFFECT STAINS Powder materials, ES01-ES14
5	3 g	BODY STAINS Powder materials, BS01-BS05
1	5 g	GLAZE
1	5 g	GLAZE LT
1	5 g	FINISHING AGENT (glazing material)
1	20 ml	POWDER FLUID
1	Quantity	Mixing plate incl. shade sample disc
		Accessories
		Working Instructions

VITA AKZENT Plus PASTE KIT (Prod. No. BAPKP)

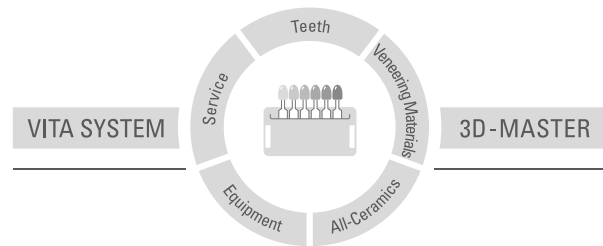
Quantity	Content	Material
14	4 g	EFFECT STAINS PASTE materials, ES01-ES14
5	4 g	BODY STAINS PASTE materials, BS01-BS05
1	4 g	GLAZE PASTE
1	4 g	GLAZE LT PASTE
1	4 g	FINISHING AGENT PASTE (glazing material)
1	15 ml	PASTE FLUID
1	Quantity	Shade sample disc
1	Quantity	Mixing plate, crystal glass (70 x 95 mm)
		Accessories
		Working Instructions

VITA AKZENT Plus SPRAY KIT (Prod. No. BAPKS)

Quantity	Content	Material
5	75 ml	BODY SPRAY, BS01-BS05
1	75 ml	GLAZE SPRAY
1	Quantity	Shade sample disc
		Working Instructions



With the unique VITA SYSTEM 3D-MASTER, all natural tooth shades can be systematically determined and perfectly reproduced.



Please note: Our products must be used in accordance with the instructions for use. We accept no liability for any damage resulting from incorrect handling or usage. The user is furthermore obliged to check the product before use with regard to its suitability for the intended area of application. We cannot accept any liability if the product is used in conjunction with materials and equipment from other manufacturers that are not compatible or not authorized for use with our product. Furthermore, our liability for the accuracy of this information is independent of the legal basis and, in as far as legally permissible, shall always be limited to the value as invoiced of the goods supplied, excluding value-added tax. In particular, as far as legally permissible, we do not assume any liability for loss of earnings, indirect damages, ensuing damages or for third-party claims against the purchaser. Claims for damages based on fault liability (culpa in contrahendo, breach of contract, unlawful acts, etc.) can only be made in the case of intent or gross negligence. The VITA Modulbox is not necessarily a component of the product. Date of issue of this information: 06.13

VITA Zahnfabrik is certified according to the Medical Device Directive and the following products bear the  0124 :

VITA SUPRINITY® VITAVM®11 VITA AKZENT® Plus

US 5498157 A AU 659964 B2 EP 0591958 B1

CEREC® and inLab® are registered trademarks of Sirona Dental Systems GmbH, Bensheim, Germany.

VITA

VITA Zahnfabrik H. Rauter GmbH & Co.KG
Postfach 1338 · D-79704 Bad Säckingen · Germany
Tel. +49(0)7761/562-0 · Fax +49(0)7761/562-299
Hotline: Tel. +49(0)7761/562-222 · Fax +49(0)7761/562-446
www.vita-zahnfabrik.com · info@vita-zahnfabrik.com
 facebook.com/vita.zahnfabrik